



Elev. C

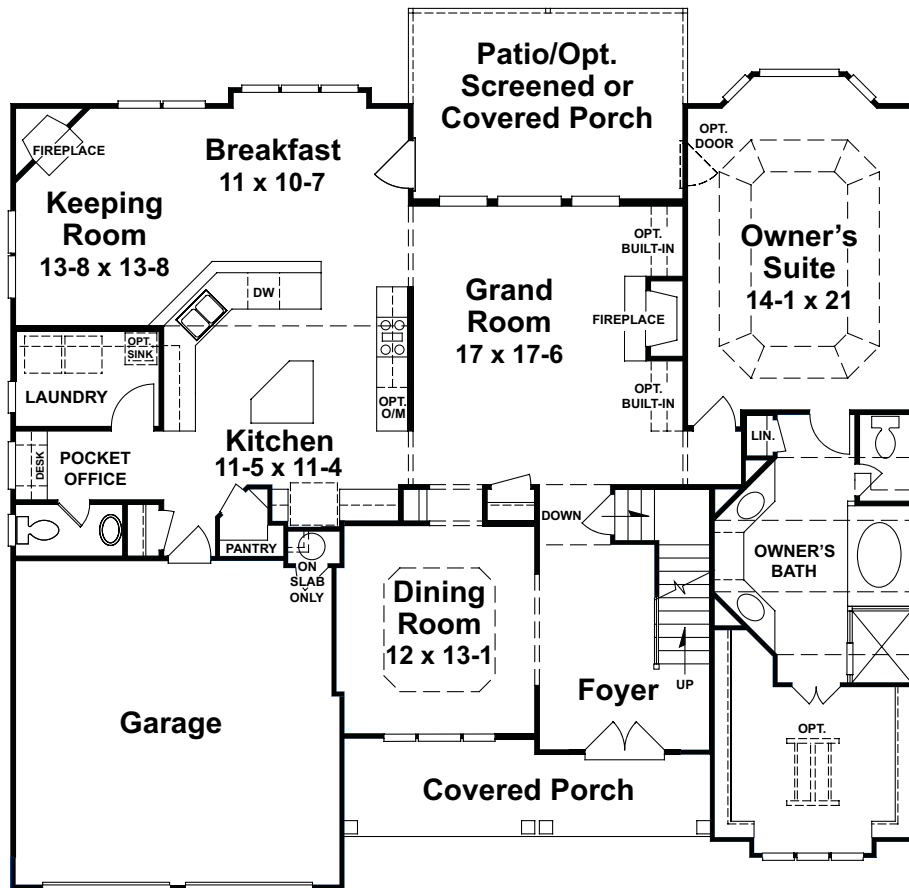
THE THORNBERRY

4 Bedrooms and 3 1/2 Baths

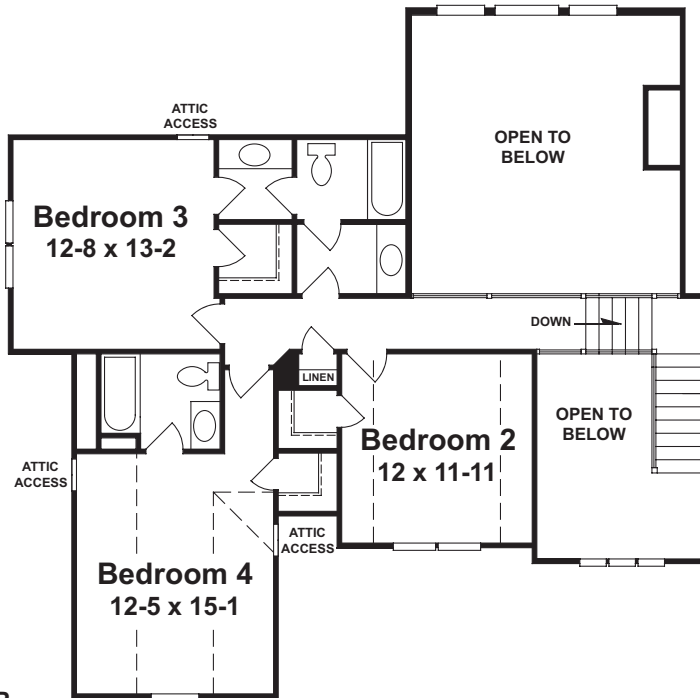
SPECIAL FEATURES

- ◆ Dramatic Foyer flanked by Formal Dining Room
- ◆ Entertaining Gourmet Island Kitchen with Pocket Office
 - ◆ Cozy Keeping Room Kitchen with Fireplace
- ◆ Sunlit Breakfast w/access to Large Optional Covered Porch
 - ◆ Spectacular, light-filled 2-Story Grand Room
- ◆ Owner's Suite on the Main w/ Luxurious Bath and Walk-in Closet
 - ◆ Large Secondary Bedroom w/2 Full Baths Upstairs

THE THORNBERRY



FIRST FLOOR



SECOND FLOOR

10/04



www.waterfordhomes.com



WATERFORD HOMES

Your "Confidence Builder"



Continuing our policy of constant research and improvement, Waterford Homes reserves the right to change plans, specifications and prices without notice or prior obligation. Floor plans and room / window configurations may vary per elevation. Elevations shown are artist concepts. All dimensions and square footages are approximate.